



Add:50 Carrington Rd Castle Hill 2154

Tel: 1300 572 154

Web:Beyondlift.com.au



# HYDRAULIC HOME LIFT

---

Make Your Living More Comfortable



# 1 Table of CONTENTS

01-07

Hydraulic Home Lift

08-12

Standard Configuration

13-14

Basic Information





# HYDRAULIC HOME LIFT

Make your living more comfortable



Hydraulic home lift can be installed without pit and without shaft, it's the most suitable model for small installation space, we have many different designs to match with your house decoration.



Small Installation Space



Decor Can Be Customized



Multiple Security Mechanisms





# Small Installation Space



$\geq 1\text{m}^2$   
LW1000\*LD1000

$\geq 2.2\text{m}$   
Top floor height

Hydraulic home lift can be installed without pit and without shaft, it's the most suitable model for small installation space, we have many different designs to match with your house decoration.





# Decor Can Be Customized

“MAKE YOUR ELEVATOR UNIQUE AND UNIQUE”



We not only focus on providing high-quality hydraulic elevators, but also provide customers with customized car interior decoration services.

Ceiling

Car Wall

Integrated Control Box

Car Door

Floor



We are well aware of the importance of car interior decoration in increasing comfort and beauty, so we provide each customer with personalized design solutions to make your elevator unique and show your personality and taste.



Hydraulic Home Lift

Focus On Home Elevators

Hydraulic Home Lift



**Safety gear**

Safety gear ensures elevator safety, with quick triggering, multiple protections and wide applicability.

**UPS**

UPS provides stable backup power, in case of power failure or wires breakdown, it will help you get out of the elevator.



**Speed limiter**

Speed limiter ensures passenger safety, avoid elevator speeding, stop in time, prevent accidents, and protect elevator equipment and building structures.

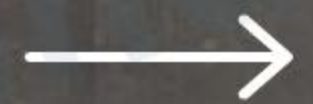
**Bottom safety sensor**

The bottom sensor will stop the elevator once it touches any obstacle, it can protect the pets and people that get under the elevator by mistake.

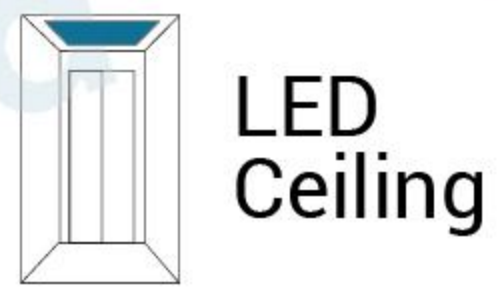
# STANDARD CONFIGURATION



Focus on home elevators





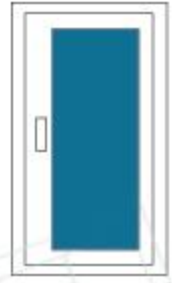


**Special car decoration**

Black titanium stainless steel and wood color.







Optional Swing Door



Glass Shaft



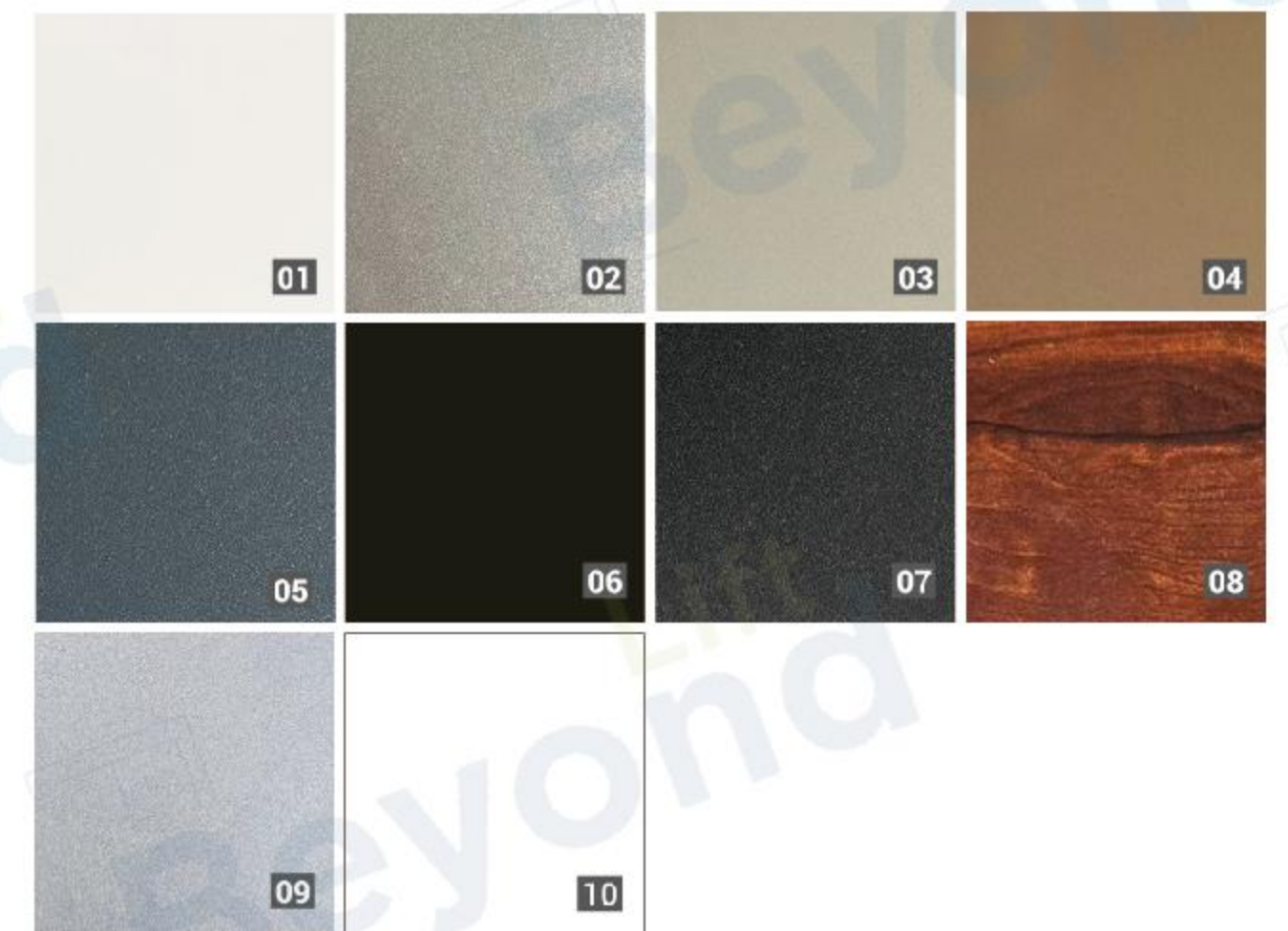
Automatic Double Swing Door

Automatic Single Swing Door Or Handle hidden manual door

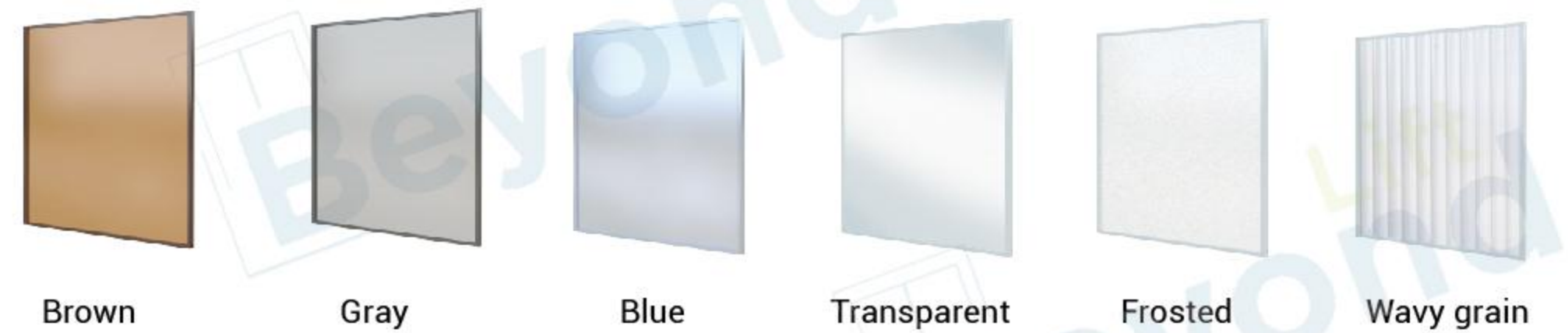
Handle type manual



Color Options



Glass Color Options



Brown

Gray

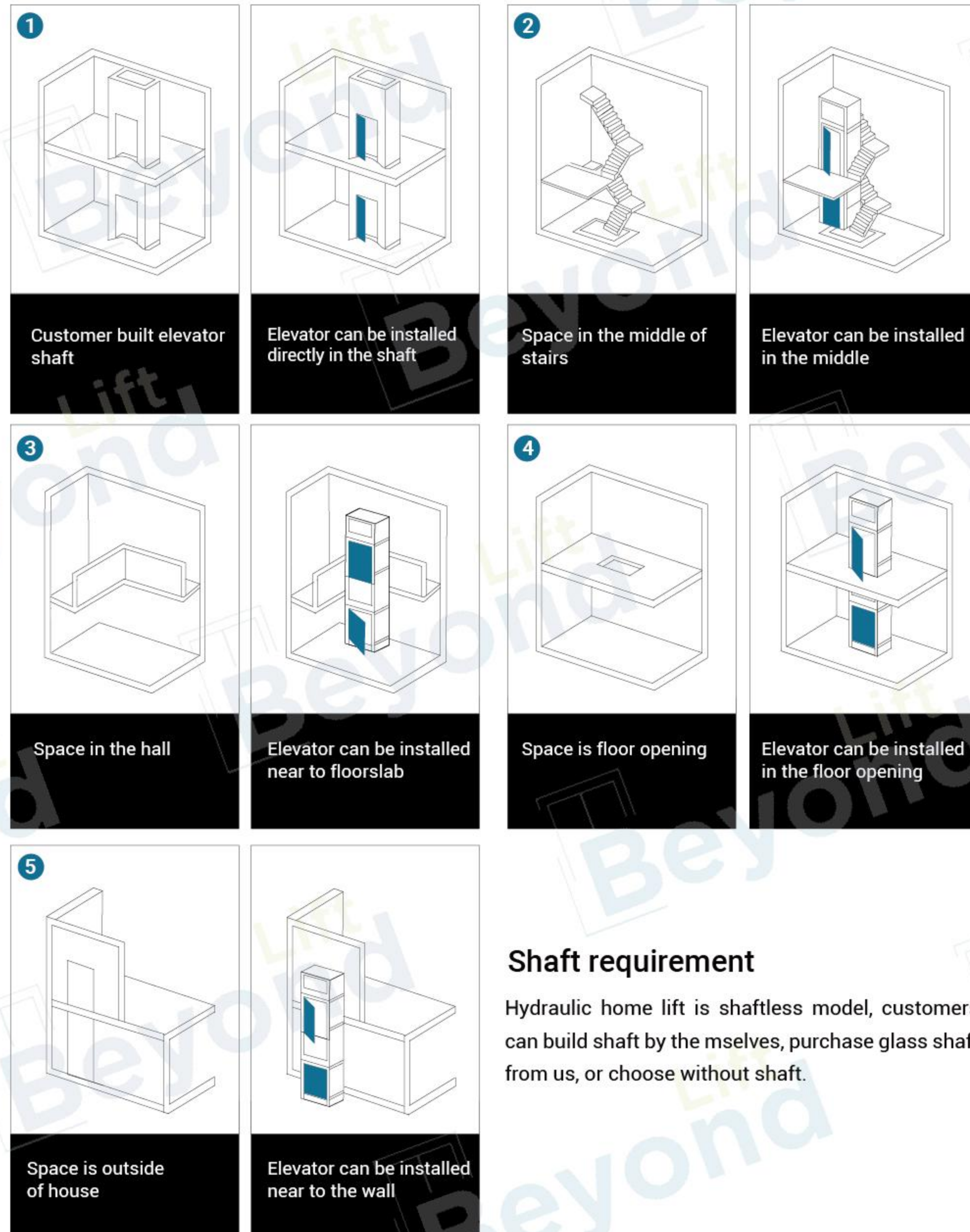
Blue

Transparent

Frosted

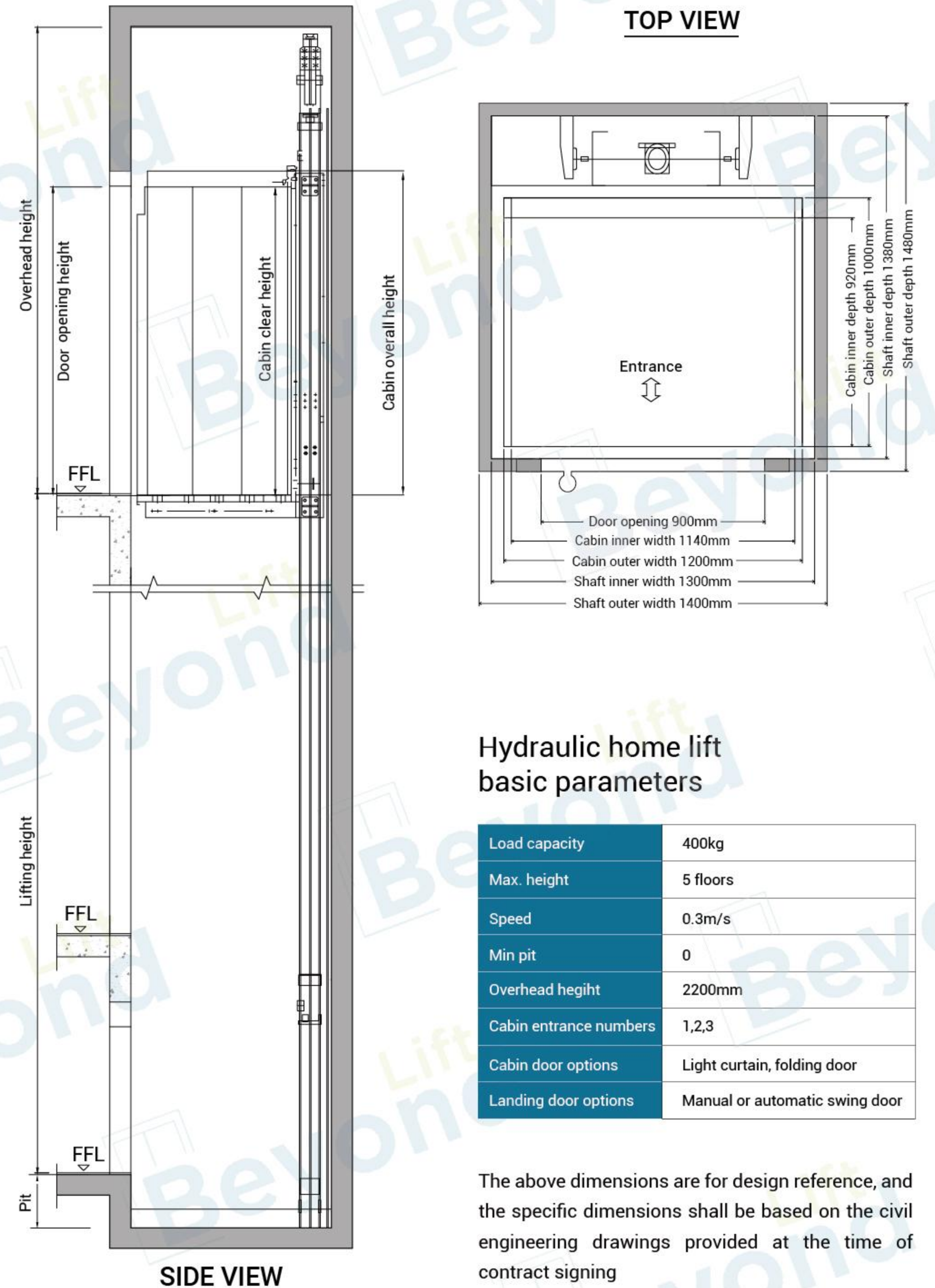
Wavy grain





**Shaft requirement**

Hydraulic home lift is shaftless model, customers can build shaft by the mselves, purchase glass shaft from us, or choose without shaft.



**Hydraulic home lift basic parameters**

Load capacity	400kg
Max. height	5 floors
Speed	0.3m/s
Min pit	0
Overhead height	2200mm
Cabin entrance numbers	1,2,3
Cabin door options	Light curtain, folding door
Landing door options	Manual or automatic swing door

The above dimensions are for design reference, and the specific dimensions shall be based on the civil engineering drawings provided at the time of contract signing